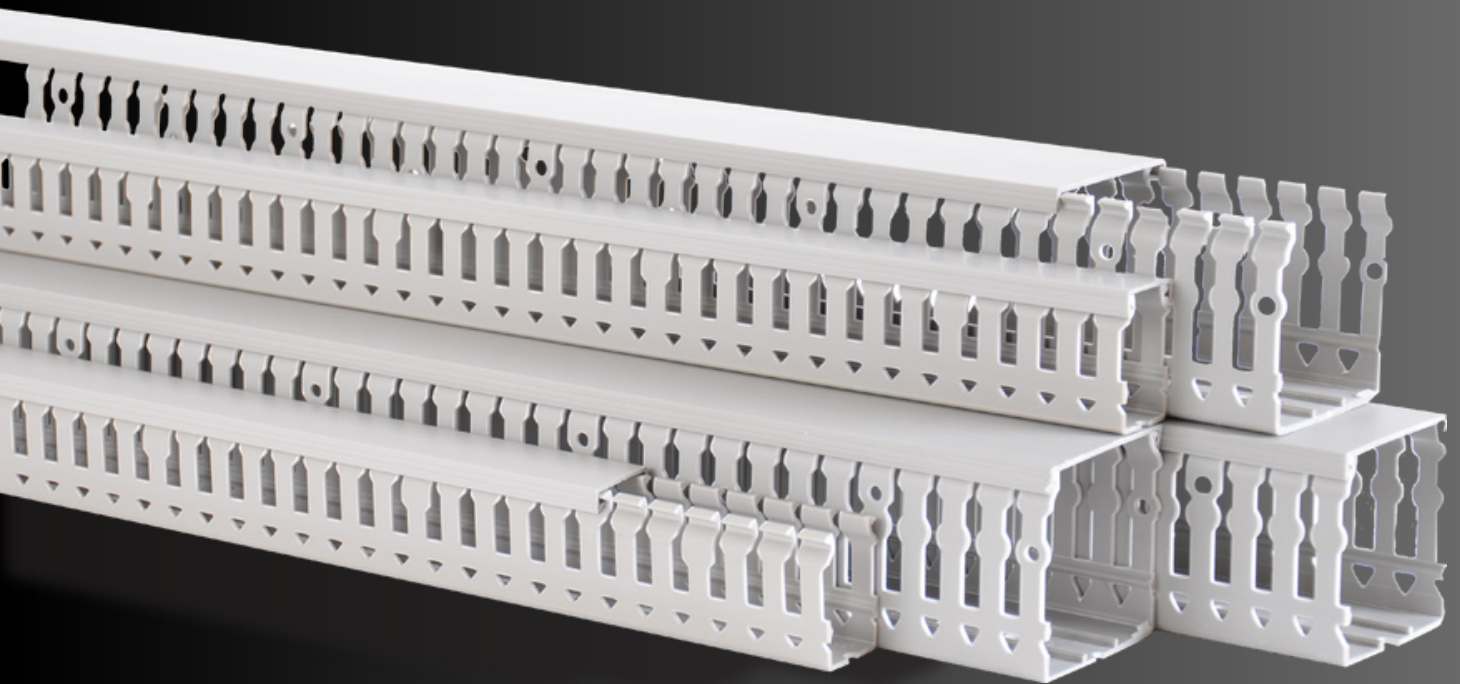




OnElecs

Electrical Products



CABLE TRUNKINGS



www.onelecs.com



NAIL WIDTH 6mm

With its wide spacing, it enables a much more robust cable management, resolving the issue of tight spaces during cable routing. Furthermore, it eliminates the uncontrolled cable swing resulting from the breaking of multiple clips when using multiple cables. In this regard, it offers a significantly more efficient solution compared to its counterparts.

SIDE WALL HOLE DESIGN

The hole design on the side walls facilitates the use of cable ties, providing convenience in cable management.

The lines on the bottom, base, and side walls.

It enables seamless and burr-free integration when joining 90-degree channel corners. As a result, your panels will have a more elegant and rigid appearance.

NAIL BREAKAGE

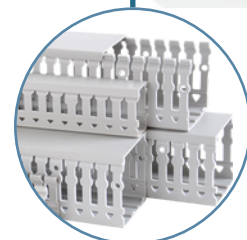
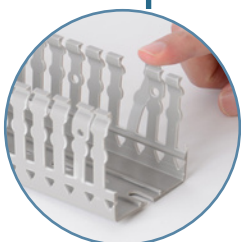
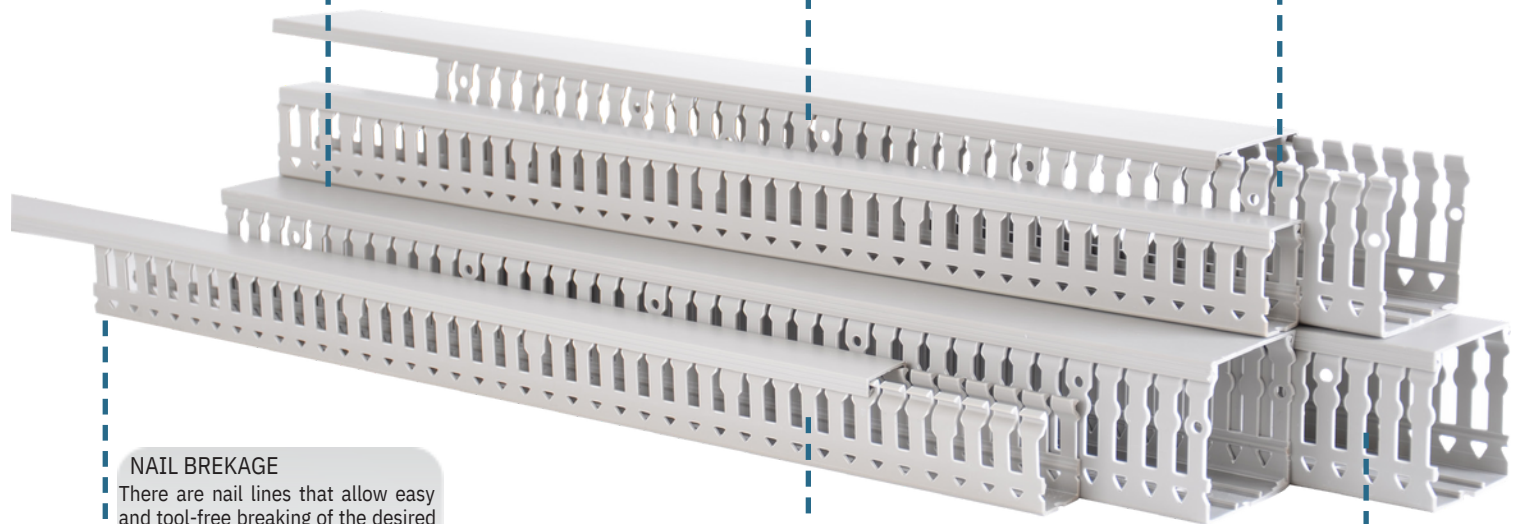
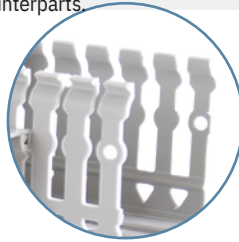
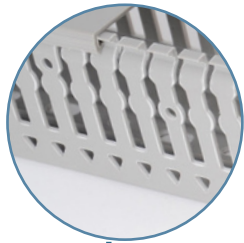
There are nail lines that allow easy and tool-free breaking of the desired clips at a 90-degree angle. This way, you can achieve a neat and burr-free appearance.

NAIL HOLE DESIGN

Thanks to the circular hole design on the clip, you can route your signal cables separately from other cables in the channel.

RAL-7030

It is compliant with international standards.



1 Nail Width – 6 mm



Due to the cable channel's 6mm nail widths, a single nail breakage will be sufficient for the passage of multiple or thicker cables through the gaps. This way, you can prevent cables from swinging between the nails by avoiding multiple nail breakages.

2 Bottom Base Lines



The "bottom base lines" are designed for the breakage of the side walls.

3 Elegant and Robust Design



It enables not only a rigid appearance in your panels but also facilitates secure connections.

4 Side Wall Lines



It provides a burr-free breaking of the nail structure.

5 Nail Hole Design

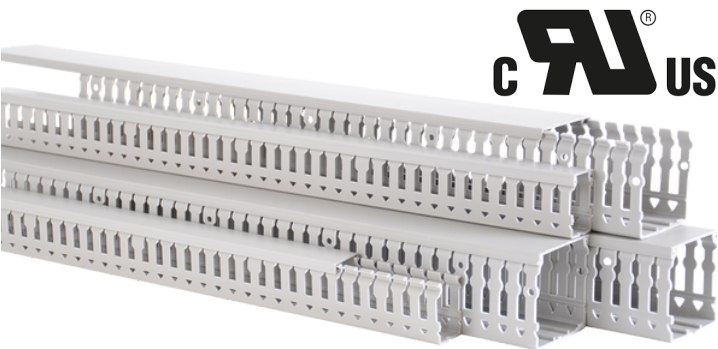


With the hole design under the clip, it facilitates the use of cable ties.

6 Compliance with International Standards



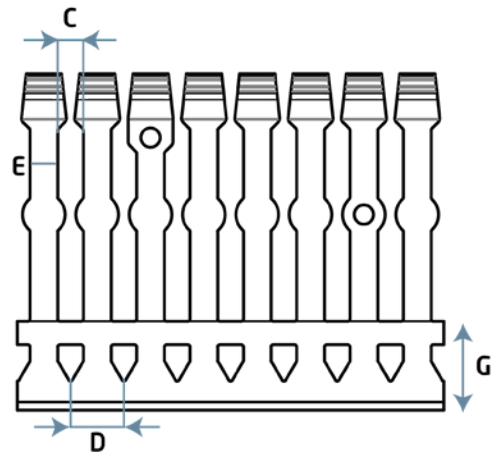
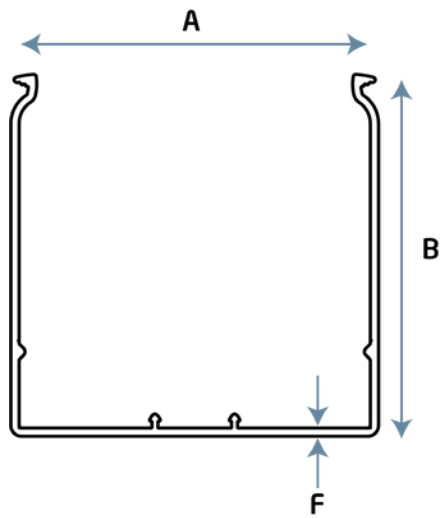
It complies with international standards RAL 7030, UL 94-V0, IEC60695-2-1, and EN50085-2-3.



CABLE TRUNKING		
Product Code	Size & Description	Box Qty. / mt.
OCT2540G	25x40 Cable Trunking	100
OCT2560G	25x60 Cable Trunking	60
OCT2580G	25x80 Cable Trunking	56
OCT4040G	40x40 Cable Trunking	52
OCT4060G	40x60 Cable Trunking	36
OCT4080G	40x80 Cable Trunking	40
OCT4010G	40x100 Cable Trunking	28
OCT6040G	60x40 Cable Trunking	36
OCT6060G	60x60 Cable Trunking	24
OCT6080G	60x80 Cable Trunking	24
OCT6010G	60x100 Cable Trunking	36
OCT8040G	80x40 Cable Trunking	36
OCT8060G	80x60 Cable Trunking	28
OCT8080G	80x80 Cable Trunking	20
OCT8010G	80x100 Cable Trunking	24
OCT1060G	100x60 Cable Trunking	20
OCT1080G	100x80 Cable Trunking	16
OCT1010G	100x100 Cable Trunking	24



CABLE TRUNKING COVER			
Product Code	Size (mm.)	Colour	Box Qty. / mt.
OCTC 250	25	RAL7030 Grey	10x2
OCTC 400	40	RAL7030 Grey	10x3
OCTC 600	60	RAL7030 Grey	10x4
OCTC 800	80	RAL7030 Grey	10x5
OCTC 1000	100	RAL7030 Grey	10x6



	DIMENSIONS (mm.)						
Size	A	B	C	D	E	F	G
25x40	25	38.7	6	12.5	6	1.4	13.5
25x60	25	58.7	6	12.5	6	1.6	17.2
25x80	25	78.7	6	12.5	6	1.8	16.5
40x40	40	38.7	6	12.5	6	1.4	14.9
40x60	40	58.7	6	12.5	6	1.6	15.6
40x80	40	78.7	6	12.5	6	1.8	19
40x100	40	98.7	6	12.5	6	1.9	20.9
60x40	60	38.7	6	12.5	6	1.6	13.5
60x60	60	58.7	6	12.5	6	1.8	17.4
60x80	60	78.7	6	12.5	6	1.8	19
60x100	60	98.7	6	12.5	6	2	21
80x40	80	39.2	6	12.5	6	1.8	15.3
80x60	80	58.9	6	12.5	6	1.8	17.4
80x80	80	78.7	6	12.5	6	1.8	20.8
80x100	80	79	6	12.5	6	2.2	21.2
100x60	100	59	6	12.5	6	2	17.6
100x80	100	78.9	6	12.5	6	1.3	21
100x100	100	99	6	12.5	6	1.3	21.2

OnElecs Electrical Products San. Tic. Ltd. Sti.

Contact Details:

Tel: +90-536 648-62-82

e-mail: sales@onelecs.com

Address: Turkali No.35/37 Besiktas/Istanbul

www.onelecs.com



/onelecs